



# PHILLIES

## Model Specifications

### ROOMS

**Bedrooms:** 4

**Bathrooms:** *Base Layout:* 1 Full, 1 3/4, 1 Half  
*Alternate Layout:* 2 Full, 1 half

### SQUARE FOOTAGE

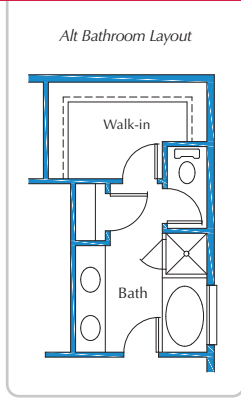
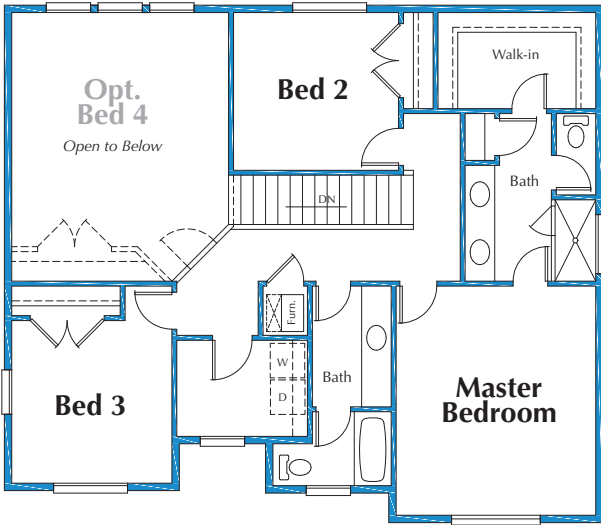
**Upper Level:** 1,001 sq. ft.

**Main Level:** 910 sq. ft.

**Basement:** 1,072 sq. ft. – *Unfinished*

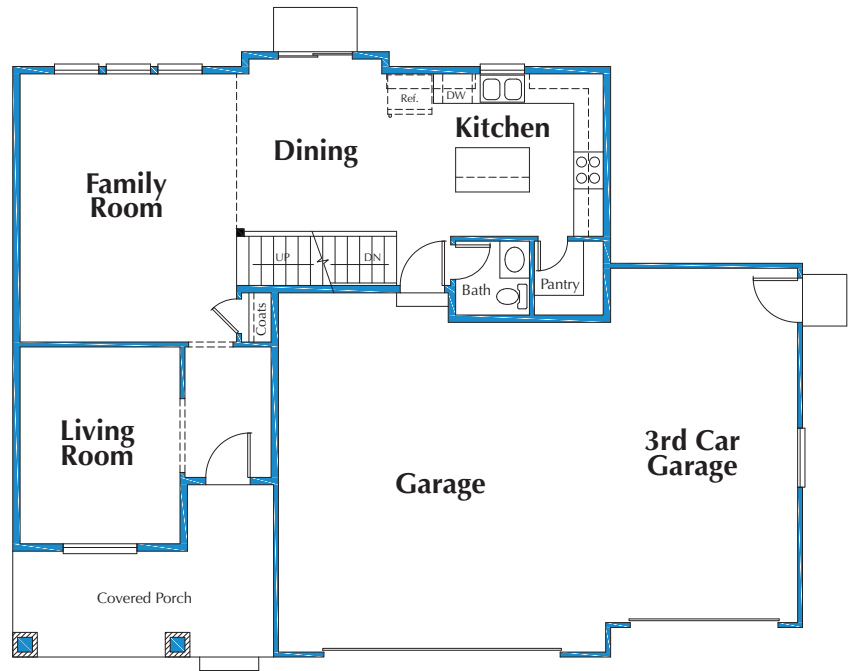
**Garage:** 851 sq. ft.

**Total:** 1,911 sq. ft. – *Finished*  
3,834 sq. ft. – *Area*

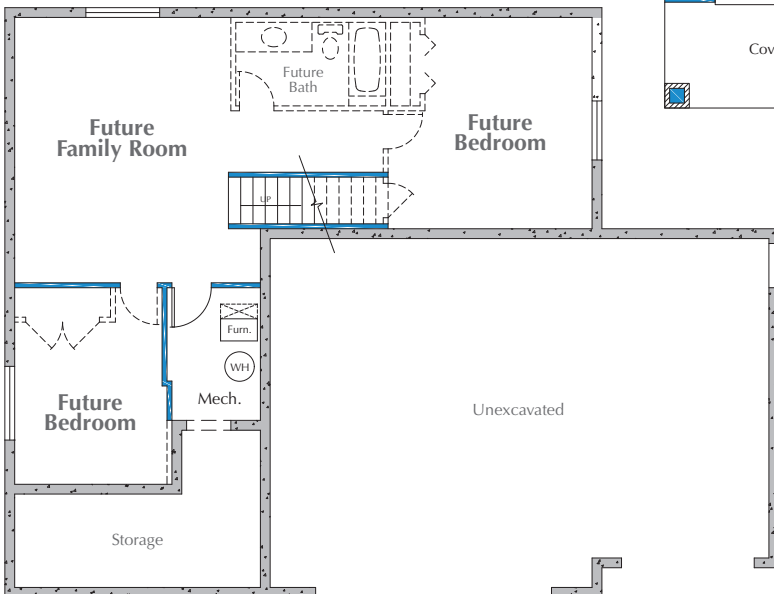


◀ Upper Floor

Main Floor ▶



◀ Basement



**TAMMY GRIFFITH**  
Associate Broker/Owner  
**435.830.2104**

**RITA DURRANT**  
REALTOR®  
**435.841.4484**



**PAM BOUGHN**  
Mortgage Professional  
NMLS 211127  
**801.231.2208**



SecurityNational Mortgage Company complies with Section 8 of RESPA and does not offer anything of value such as marketing services or defrayed business costs in exchange for referrals or for the expectation of referrals. This is not a commitment to make a loan. Loans are subject to borrower and property qualifications. Contact loan originator listed for an accurate, personalized quote. Interest rates and program guidelines are subject to change without notice.

SecurityNational Mortgage Company | 433 Ascension Way, Suite 500, Salt Lake City, UT 84123 | Branch: 801.838.9808 | Corporate: 801.264.8111