



METROPOLITAN

Model Specifications

ROOMS

Bedrooms: 2

Bathrooms: 1 Full, 1 3/4

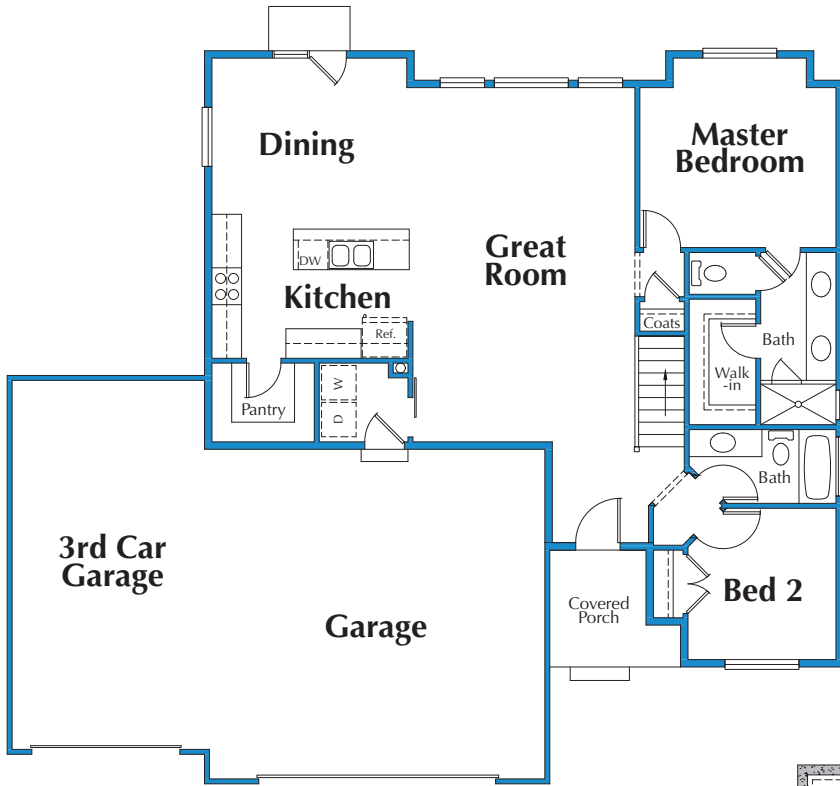
SQUARE FOOTAGE

Main Level: 1,364 sq. ft.

Basement: 1,294 sq. ft. — *Unfinished*

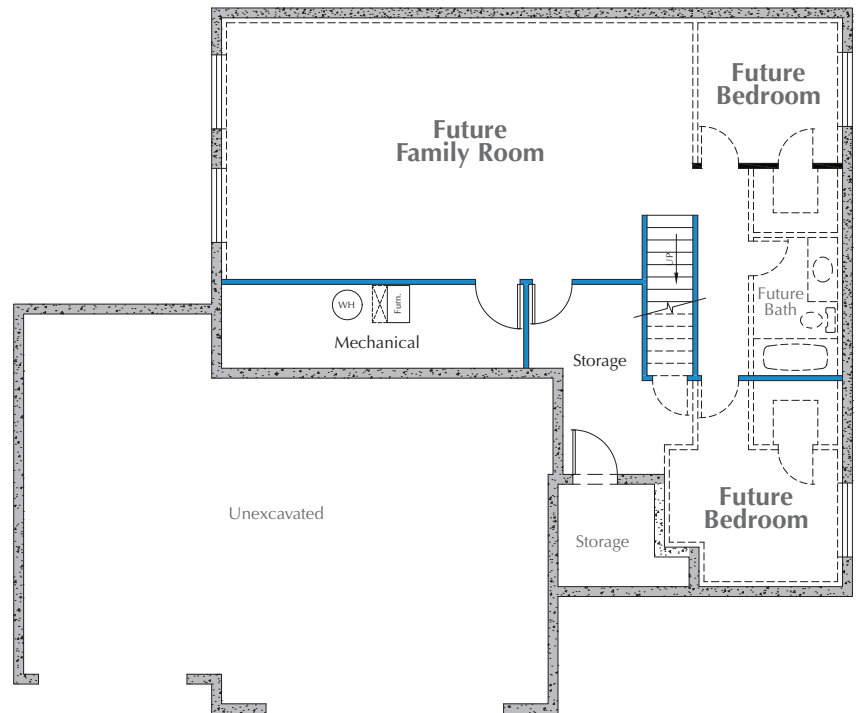
Garage: 840 sq. ft.

Total: 1,364 sq. ft. — *Finished*
3,498 sq. ft. — *Area*



◀ Main Floor

Basement ▶



TAMMY GRIFFITH
Associate Broker/Owner
435.830.2104

RITA DURRANT
REALTOR®
435.841.4484



PAM BOUGHN
Mortgage Professional
NMLS 211127
801.231.2208



Company
NMLS 3116

SecurityNational Mortgage Company complies with Section 8 of RESPA and does not offer anything of value such as marketing services or defrayed business costs in exchange for referrals or for the expectation of referrals. This is not a commitment to make a loan. Loans are subject to borrower and property qualifications. Contact loan originator listed for an accurate, personalized quote. Interest rates and program guidelines are subject to change without notice.

SecurityNational Mortgage Company | 433 Ascension Way, Suite 500, Salt Lake City, UT 84123 | Branch: 801.838.9808 | Corporate: 801.264.8111